

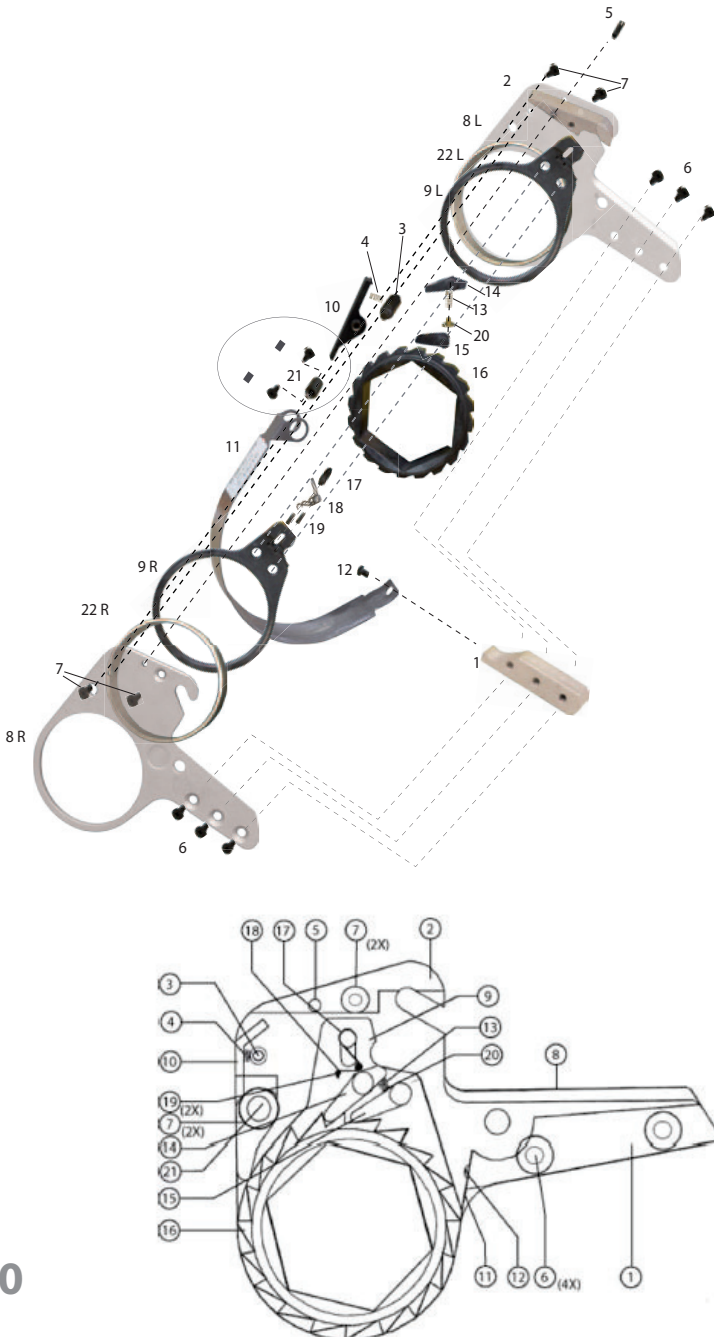
SECTION VI

DISASSEMBLY

RTX LOW CLEARANCE TOOL

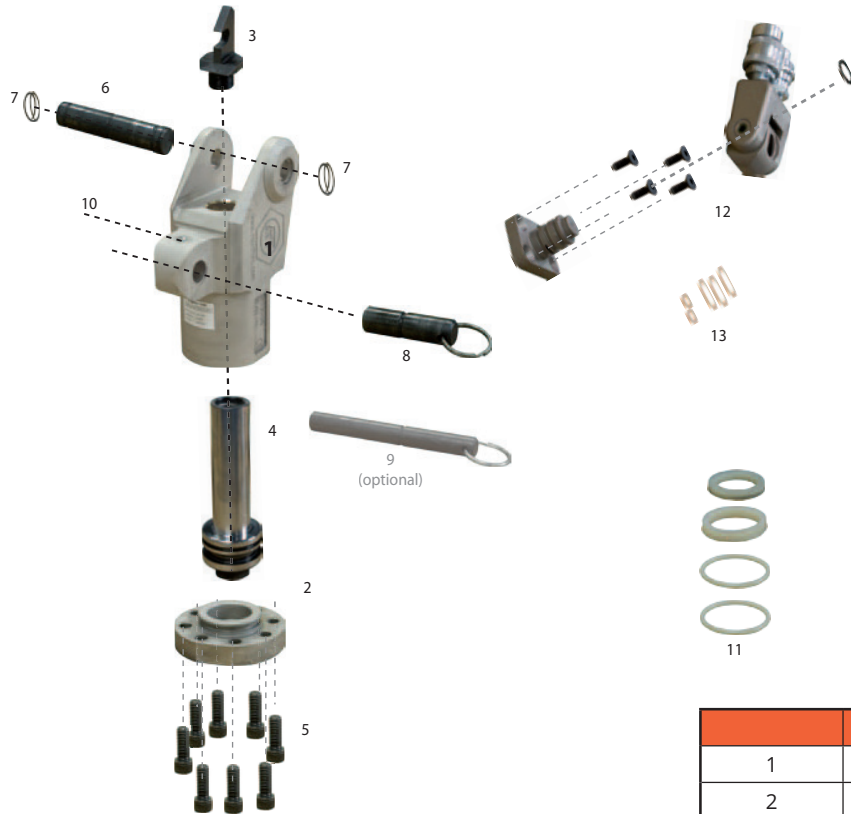
1. Make sure the tool is fully retracted.
2. Remove the ratchet link.
3. Remove shroud by removing the two button head cap screws at the base of the housing. Unhook the superior part of the shroud.
4. Remove the 4 screws on each side of the ratchet link. Remove the two side plates.
5. Remove the reaction paw (#10, 3 & 4)
6. Remove ratchet (#16), 2 drive plates (#9) and drive pawl assy. (#13, 14, 15, 17, 18, 19 & 24)
7. Remove the 8 end cap bolts (#26) and remove the End cap (#2).
8. Unscrew the rod end (#5).
9. Remove the piston rod assembly which consists of parts (3 &4) by tapping the piston rod (#4) with a punch and a hammer through the cylinder.

Note: For assembly, follow the instructions in reverse. Be sure to properly lubricate all components prior to use.



	Description	Part Number
1	Reaction Block Spacer	RTX-#45
2	Top Spacer	RTX-#46
3	Reaction Pawl Spring Spacer	RTX-#47
4	Reaction Pawl Spring	RTX-#37
5	Side Plate Roll Pin	RTX-#48
6	Side Plate Screw Bottom (4)	RTX-#50
7	Side Plate Screw Top (4)	RTX-#51
8	Side Plate (left or right)	RTX-#52
9	Drive Plate (left or right)	RTX-#35
10	Reaction Pawl	RTX-#36
11	Shroud	RTX-#43
12	Shroud Screw	RTX-#44
13	Drive Pawl Spring	RTX-#27
14	Drive Pawl Primary	RTX-#22
15	Drive Pawl Secondary	RTX-#23
16	Ratchet	RTX-#28
17	Drive Pin	RTX-#33
18	Drive Pin Spring	RTX-#34
19	Drive Spring Roll Pin	RTX-#32
20	Spring Seat	RTX-#49
21	Reaction Pawl Pin	RTX-#99

SECTION VI DISASSEMBLY



	Description	Part Number
1	Housing	RTX-#-01
2	End Cap	RTX-#-02
3	Rod End	RTX-#-05
4	Piston Rod Assembly	RTX-#-06
5	Cylinder End Cap Screws	RTX-#-07
6	Fixed Upper Pin	RTX-#-08
7	Fixed Upper Pin Ring (2)	RTX-#-09
8	Link Pin Short	RTX-#-10
9	Link Pin Long (optional)	RTX-#-11
10	Link Pin Retainer	RTX-#-12
11	Housing Seal Kit	RTX-#-13
12	Swivel Assembly 180 X 360	RTX-#-62
13	Swivel Seal Kit	RTX-#-63

