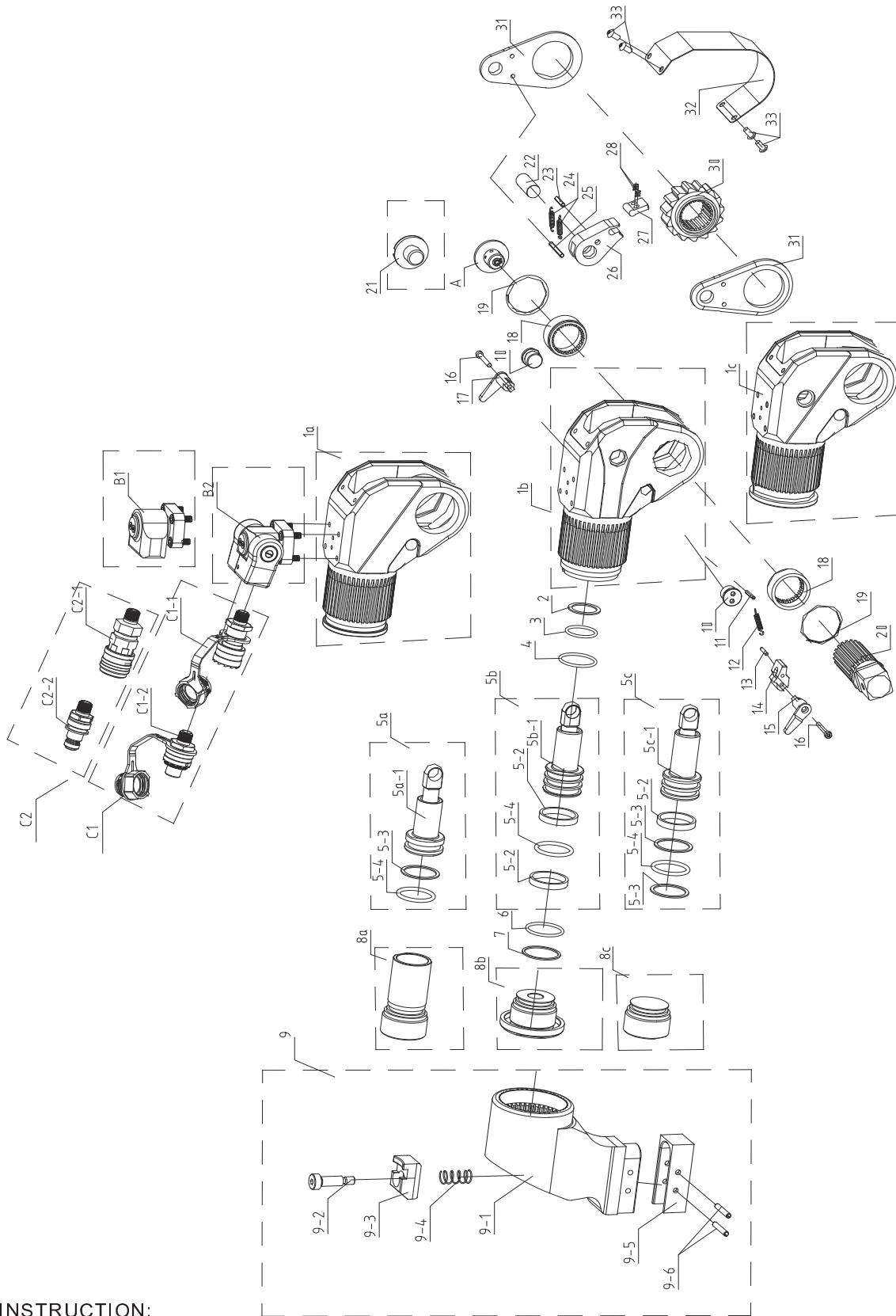


IBT Series Square Drive Torque Wrench Exploded View Drawing

07IBT、1IBT、3IBT、5IBT、8IBT、10IBT、20IBT、25IBT、35IBT、50IBT SERIES



INSTRUCTION:

1. Swivel B1 and B2 are optional parts, own interchange ability.
2. Quick coupler C1 assembly and C2 assembly are optional parts, own interchange ability.
3. #1 Body assembly and 5-1# piston assembly are not detachable parts.

IBT Series Hydraulic Torque Wrench

PARTSLIST--IBT SERIES

Model Number		07IBT	IBT	3IBT	5IBT	8IBT	10IBT	20IBT	25IBT	35IBT	50IBT
Item	Name	Quantity	Quantity	Quantity	Quantity	Quantity	Quantity	Quantity	Quantity	Quantity	Quantity
1a	Body	1									1
1b				1	1	1	1	1	1	1	
1c			1								
2	Retaining Ring of Body		1								
3	O-Ring/U-Ring for Body	1	1	1	1	1	1	1	1	1	1
4	O-Ring for Piston Housing	1									
5a	Piston Rod Assembly	1									
5b								1	1	1	1
5c			1	1	1	1	1				
5a-1	Piston Assembly	1									
5b-1								1	1	1	1
5c-1			1	1	1	1	1				
5-2	Wearable Ring for Piston Rod		1	1	1	1	1	2	2	2	2
5-3	Retaining Ring	1	1	1	1	2	1				
5-4	O-Ring for Piston Rod	1	1	1	1	1	1	1	1	1	1
6	O-Ring for End Cap	1	1	1	1	1	1	1	1	1	1
7	Retaining Ring for End Cap		1	1	1	1	1	1	1	1	1
8a	End Cap			1	1	1	1	1	1	1	
8b		1									
8c			1								1
9	Reaction Arm Assembly	1	1	1	1	1	1	1	1	1	1
9-1	Reaction Arm	1	1	1	1	1	1	1	1	1	1
9-2	Screw	1	1	1	1	1	1	1	1	1	1
9-3	Reaction Arm Fixer	1	1	1	1	1	1	1	1	1	1
9-4	Compressed Spring for Reaction Arm	1	1	1	1	1	1	1	1	1	1
9-5	Reaction Arm Cover	1	1	1	1	1	1	1	1	1	1
9-6	Pin for Reaction Arm Cover	1	1	1	2	2	2	2	2	2	2
10	Screw	2	2	2	2	2	2	2	2	2	2
11	Pin for Body	1	1	1	1	1	1	1	1	1	1
12	Tension Spring for Reaction Pawl	1	1	1	1	1	1	1	1	1	1
13	Reaction Pawl Pin	1	1	1	1	1	1	1	1	1	1
14	Reaction Pawl	1	1	1	1	1	1	1	1	1	1
15	Button Lever(Left)	1	1	1	1	1	1	1	1	1	1
16	Screw for Button Lever	2	2	2	2	2	2	2	2	2	2
17	Button Lever(Right)	1	1	1	1	1	1	1	1	1	1
18	Drive Sleeve Spline	2	2	2	2	2	2	2	2	2	2
19	Cirdip	2	2	2	2	2	2	2	2	2	2
20	Square Drive	1	1	1	1	1	1	1	1	1	1
A	Drive Retainer	1	1	1	1	1	1	1	1	1	
21	Drive Retainer Screw										1
22	Drive Pin	1	1	1	1	1	1	1	1	1	1
23	Roll Pin for Drive Pawl Primary	1	1	1	1	1	1	1	1	1	1
24	Tension Spring for Drive Pawl Primary	2	2	2	2	2	2	2	2	2	2
25	Drive Plate Pin	1	1	1	1	1	1	1	1	1	1
26	Drive Pawl Primary	1	1	1	1	1	1	1	1	1	1
27	Drive Pawl Secondary	1	1	1	1	1	1	1	1	1	1
28	Compressed Spring Drive Pawl Secondary	1	2	1	2	2	1	1	1	1	1
29	Roll Pin for Compressed Spring Drive Pawl Secondary	1					1	1	1	1	1
30	Ratchet Spline	1	1	1	1	1	1	1	1	1	1
31	Drive Plate	2	2	2	2	2	2	2	2	2	2
32	Shroud	1	1	1	1	1	1	1	1	1	1
33	Screw for Cover Plate	4	4	4	4	4	4	4	4	4	4
B1	Swivel Assembly	1	1	1	1	1	1	1	1	1	1
B2		1	1	1	1	1	1	1	1	1	1
C1-1	Male Coupler	1	1	1	1	1	1	1	1	1	1
C2-1		1	1	1	1	1	1	1	1	1	1
C1-2	Female Coupler	1	1	1	1	1	1	1	1	1	1
C2-2		1	1	1	1	1	1	1	1	1	1

INSTRUCTION: 1. Swivel B1 and B2 are optional parts, own interchange ability.
 2. Quick coupler C1 assembly and C2 assembly are optional parts, own interchange ability.
 3. #1 Body assembly and 5-1# piston assembly are not detachable parts.