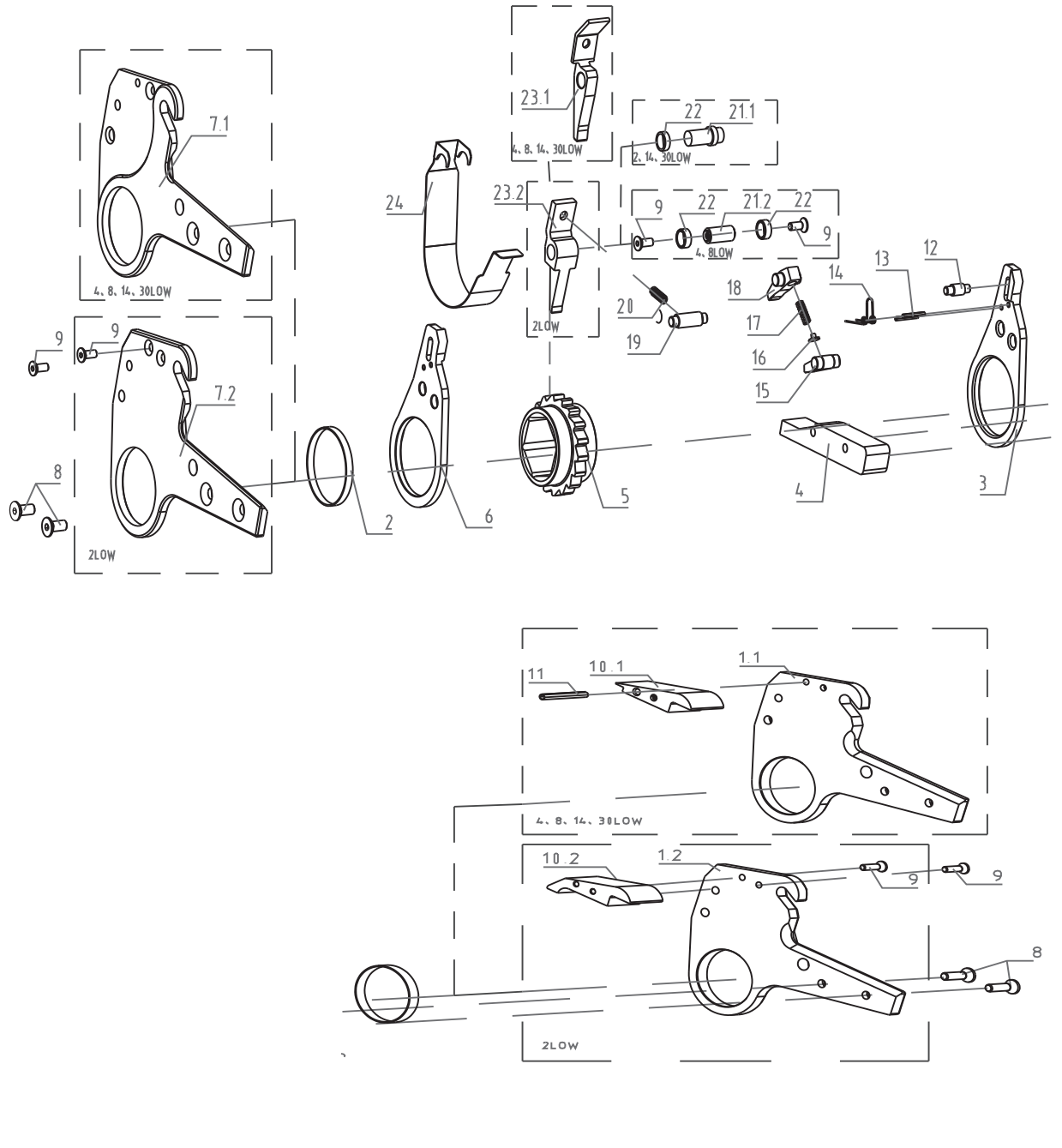


ASSEMBLING DRAWING FOR RATCHET LINK--LOW SERIES

2LOW, 4LOW, 8LOW, 14LOW, 30LOW SERIES

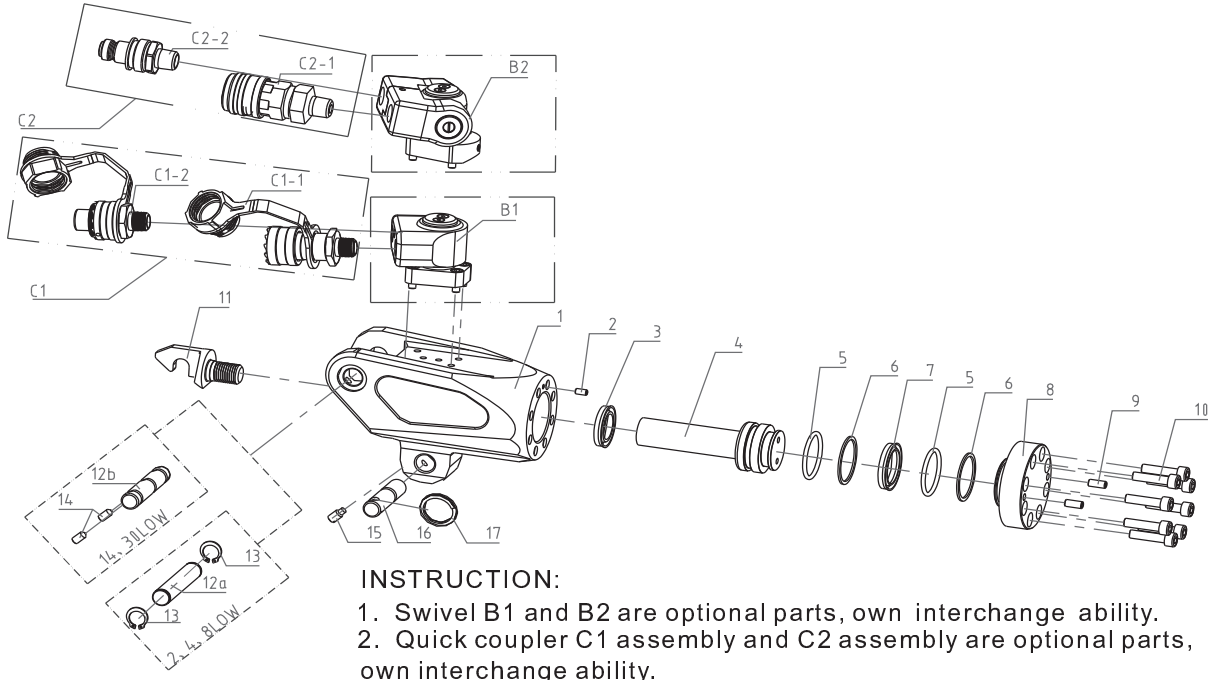


PARTS LIST FOR RATCHET LIINK---LOW SERIES

Item	Model Number Name	2LOW Quantity	4LOW Quantity	8LOW Quantity	14LOW Quantity	30LOW Quantity
1a	Side Plate(Left)		1	1	1	1
1b						
2	Copper Belt				2	2
3	Drive Plate(Right)	1	1	1	1	1
4	Reaction Block	1	1	1	1	1
5	Ratchet Spline	1	1	1	1	1
6	Drive Plate(Left)	1	1	1	1	1
7a	Side Plate(Right)		1	1	1	1
7b		1				
8	Reaction Block Screw	4	4	4	4	4
9	Screw(Reaction Pawl Bushing And Top Spacer)	4	4	4	2	2
10a	Top Spacer		1	1	1	1
10b		1				
11	Roll Pin for Top Spacer		1	1	1	1
12	Drive Pin for Drive Plate	1	1	1	1	1
13	Roll Pin for Drive Plate	2	2	2	2	2
14	Drive Pin Spring	1	1	1	1	1
15	Drive Pawl	1	1	1	1	1
16	Spring Seat	1				
17	Compressed Spring	1	1	1	1	1
18	Drive Pawl Primary	1	1	1	1	1
19	Pin for Side Plate	1	1	1	1	1
20	Compressed Spring for Reaction Pawl	1	1	1	1	1
21a	Shaft of Rotation	1			1	1
21b			1	1		
22	Reaction Pawl Bushing	1	2	2	1	1
23a	Reaction Pawl		1	1	1	1
23b		1				
24	Shroud	1	1	1	1	1

DRAWING FOR POWER HEAD WITH SWIVEL ON TOP AND PART LIST-LOW SERIES

2LOW、4LOW、8LOW、14LOW、30LOW SERIES



Model Number		2LOW	4LOW	8LOW	14LOW	30LOW
Item	Name	Quantity	Quantity	Quantity	Quantity	Quantity
1	Body	1	1	1	1	1
2	Casing Cap of Body	1		1	1	1
3	U-Ring for Body	1	1	1	1	1
4	Piston Rod	1	1	1	1	1
5	O-Ring for Piston Rod and End Cap	2	2	2	2	2
6	Retaining Ring for Piston Rod and End Cap	1	2	2	2	2
7	U-Ring for Piston Rod	1	1	1	1	1
8	End Cap	1	1	1	1	1
9	End Cap Screw		2	2	2	2
10	Screw of Body	8	8	8	8	8
11	Rod End	1	1	1	1	1
12a	Fixed Pin Upper	1	1	1		
12b					1	1
13	Retaining Ring for Fixed Pin Upper	2	2	2		
14	Screw for Fixed Pin Upper				2	2
15	Screw with Spring	1	1	1	1	1
16	Link Pin	1	1	1	1	1
17	Draw Ring	1	1	1	1	1
B1	Swivel	1	1	1	1	1
B2		1	1			
C1-1	Male Coupler	1	1	1	1	1
C2-1		1	1	1	1	1
C1-2	Female Coupler	1	1	1	1	1
C2-2		1	1	1	1	1

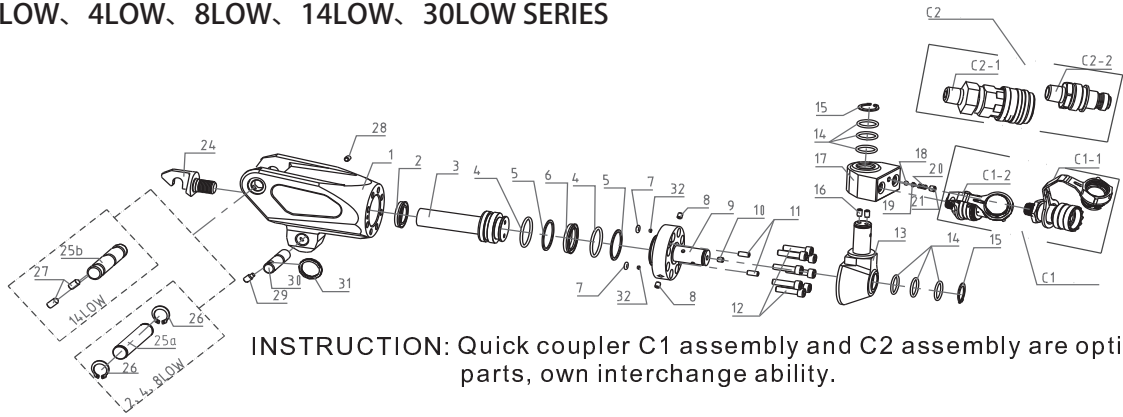
INSTRUCTION:

1. Swivel B1 and B2 are optional parts, own interchange ability.
2. Quick coupler C1 assembly and C2 assembly are optional parts, own interchange ability.

LOW Series Hydraulic Torque Wrench

DRAWING FOR POWER HEAD WITH SWIVEL IN BACKSIDE AND PART LIST-LOW SERIES

2LOW, 4LOW, 8LOW, 14LOW, 30LOW SERIES



INSTRUCTION: Quick coupler C1 assembly and C2 assembly are optional parts, own interchange ability.

Model Number		2LOW	4LOW	8LOW	14LOW
Item	Name	Quantity	Quantity	Quantity	Quantity
1	Body	1	1	1	1
2	U-Ring for Body	1	1	1	1
3	Piston Rod	1	1	1	1
4	O-Ring for Piston Rod and End Cap	2	2	2	2
5	Retaining Ring for Piston Rod and End Cap	1	2	2	2
6	U-Ring for Piston Rod	1	1	1	1
7	O-Ring for End Cap	2	1	1	2
8	Screw of Side End Cap	2	1	1	2
9	End Cap	1	1	1	1
10	Screw of Top End Cap	2	1	1	2
11	End Cap Screw		2	2	2
12	Screw of Body	8	8	8	8
13	Swivel	1	1	1	1
14	O-Ring for The Swivel	6	6	6	6
15	Retainer Ring for The Swive	2	2	2	2
16	Screw for The Swivel	4	2	2	4
17	Swivel Joint	1	1	1	1
18	Steel Ball	1	1	1	1
19	Spring Pedestal	1	1	1	1
20	Spring	1	1	1	1
21	Plug	1	1	1	1
24	Rod End	1	1	1	1
25a	Fixed Pin Upper	1	1	1	
25b					1
26	Retaining Ring for Fixed Pin Upper	2	2	2	
27	Screw for Fixed Pin Upper				2
28	Screw	2	1	1	1
29	Screw with Spring	1	1	1	1
30	Link Pin	1	1	1	1
31	Draw Ring	1	1	1	1
32	Copper Gasket	2			
C1-1	Male Coupler	1	1	1	1
C2-1		1	1	1	1
C1-2	Female Coupler	1	1	1	1
C2-2		1	1	1	1

INSTRUCTION: quick coupler c1 assembly and c2 assembly are optional parts, own interchange ability.